

Conditions of flexitank application

Limited to the transportation of non-hazardous liquid

Limited to be fitted in ISO 20' container

The loading capacity does not exceed the rate capacity.

The loading capacity should achieve 90% of rate capacity at least.

The highest temperature of the loading liquid is 80 °C.

The lowest temperature of the loading liquid is -20 °C.

The fastest loading rate is 700 liters/minute.

The consigner and consignee should have liquid deposit container, pump, connection tube and quick connector.

The liquid cargo transportation must be covered by transportation insurance.

Formula on the selection flexitank capacity: the loading weight (kgs) = the capacity of the fleixtank(liters)× the density of the liquid.

I . The Selection of the Containers

1.1 Container should be 20” international standard container which age less than 3 years.



1.2 The minimum tare weight of the container is 23tons, and the container load-bearing is no less than 30480 kgs.

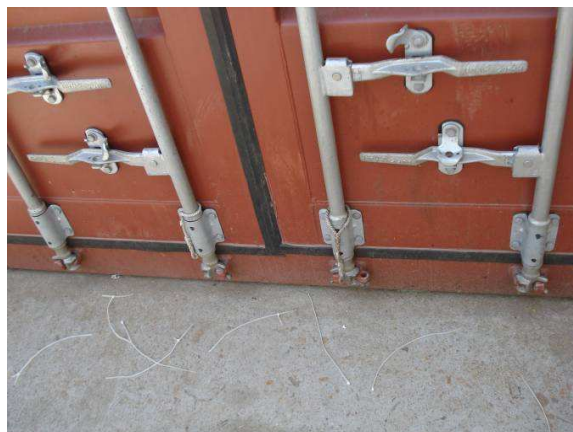


1.3 The appearance of the container keeps good condition without serious cracks, creases or repairing welding lines. Air vent no blocked.

1.4 The floor of the container keeps level, clean and fast, without damage. The inside wall of container with no bumps, sharps or rough welding point.

1.5 Inside of container door are clean without burr or any sharps.

1.6 The locking catches are intact and well-performance. Door handles and stops are complete and workable.



II. Staff Request

1. Wear uniform and avoid clothing with button in case they would fall inside of the container.
2. Wear flat base rubber shoes or the soft bottom rubber shoes, and prevent pebbles or sharp objects being carried into the container.
3. Accessories or keys are not allowed to wear when install flexitanks.



III. The Handling of the Container

1. Open both doors of the container, check and clean the container inside from the rear and walls to remove all hidden risks.



2. Clean the floor and sweep all the sharp objects away.



3. Open the box of metal bars, and lean them against container door outside.



4. Cut the box of metal bars into cardboard pieces.



5. Open the box of flexibag, and take the adhesive tape out.



6. Cover the lash fittings under container side walls and the side lines of container rear with cardboard pieces, and stick the cardboard by adhesive tape.



7. Recheck the container for sharp objects and hidden danger of leakage.



IV. Spread the corrugated paper

1. Spread the paper roll from left side of container



2. 20cm of corrugated paper should be kept above the container floor
3. Spread the other roll of corrugated paper over the right side of container. Follow the same way as procedure 1&2



4. Spreading and covering the paper roll over 3 container walls (side wall→end, wall→side wall). Firstly, please cover one side wall and fix it from the top side with adhesive tape. Tape should be affixed every 5 lines of container corrugation.

5. Fix the bottom side



6. Covering the end wall with double layers of corrugated paper
7. Follow the same way as procedure 4&5 to cover the other side wall till all three walls are protected by corrugated paper.



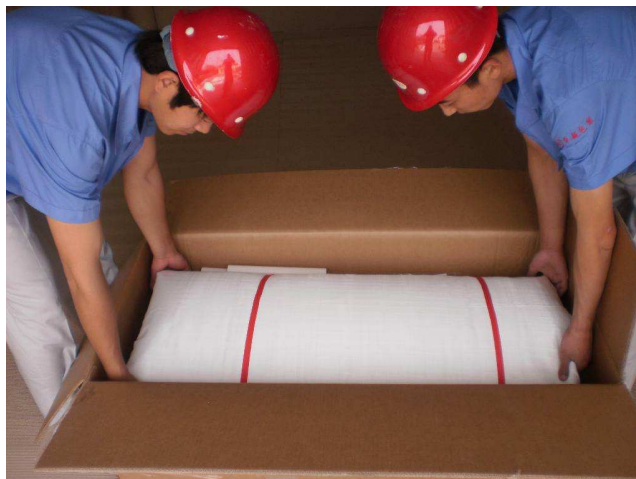
8. Abandon the residual corrugated paper after container is fully protected.



V. Fitting the Bulk Head

(Top loading/discharging flexitank)

1. Put flexitank box into container, and take out the flexibag.



2. Put the flexibag on the left side of container floor.



3. Check to ensure all accessories complete



4. Erect the cardboard bulkhead into container



5. Crush one of the white tubes at one end.



6. Inset the flatted end into left corner below the container door.



7. Install the 30mm metal bar along the bottom side of container door, the end should be inserted into the right slot.



8. The left end should also be inserted into the slot.



9. Crush another PVC tube at one end and insert it into the container corner



10. Install the 50mm metal bars from bottom to top and all put into the slots



11. One installing staff goes inside of container and press the cardboard bulkhead against metal bars.



12. Another installing staff work outside of container and fix the metal bar with the bulkhead from top to bottom with red ribbons.



13. Install the XPS vertically against the horizontal bars.



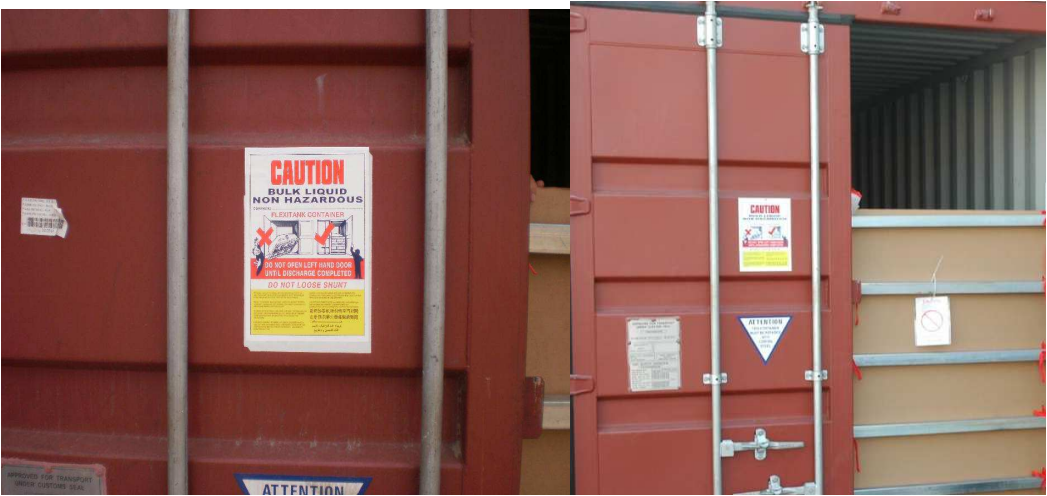
14. Close the left door of container



15. Fix the smaller warning tag on the second metal bar.



16. Affix the big warning tag on the left door of the container.



VI. Fitting of the Flexitank (Bottom loading/discharging)

1. Take flexibag out.



2. Unhitch the ribbon of the flexibag.



3. Spread the flexibag towards the container door.



4. Expand the flexibag



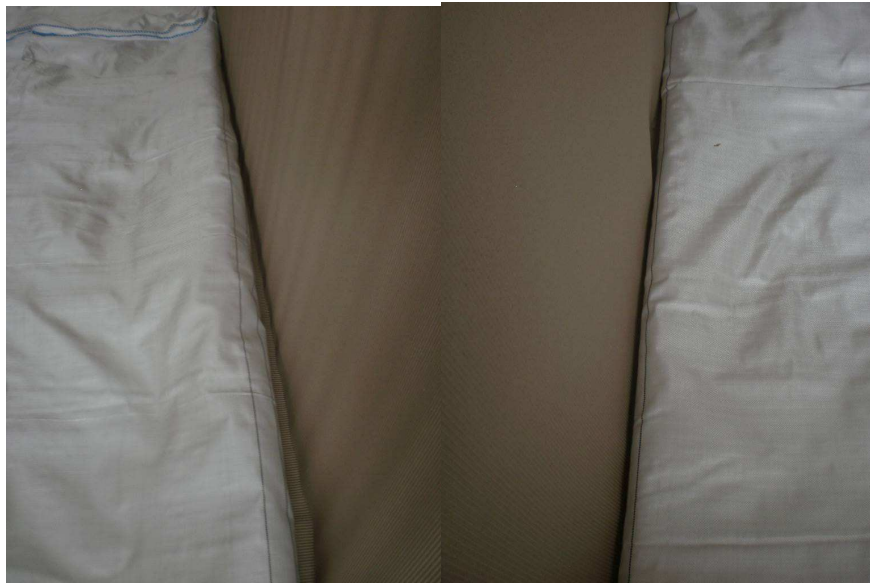
5. There is a mark line on end of flexibag. Keep it coincide with bottom end line of container.



6. Center line of flexibag as benchmarking



7. Expand the flexibag towards two walls of the container. Two black mark lines should be coincide with the two bottom side lines of the container.



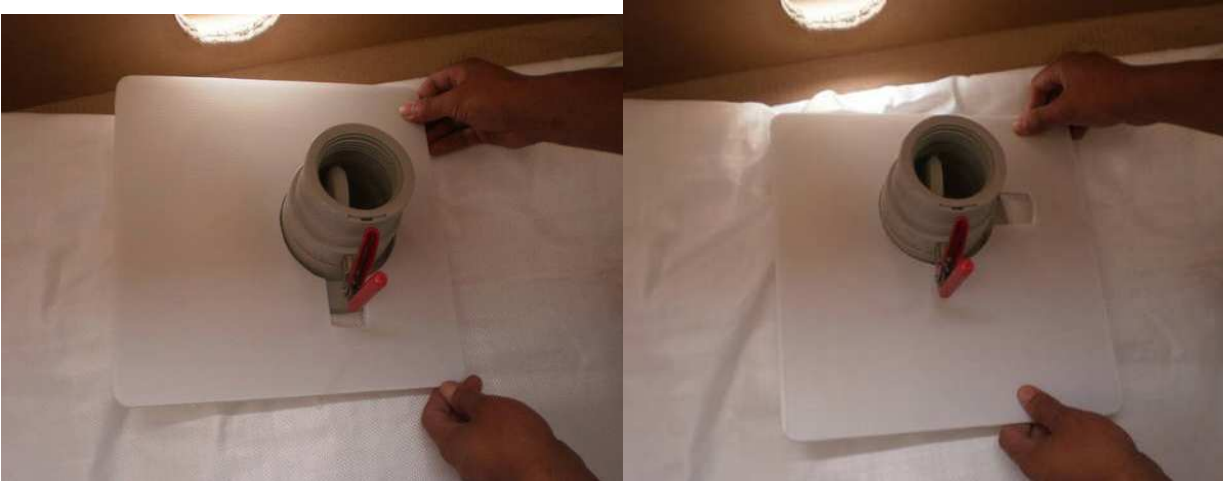
8. Install the bottom valve



9. Take off the valve cap



10. Plug the PP spile into the valve



11. Revolve the PP spile anticlockwise at a 90 degree while keep the valve still.

12. Put the valve through the valve hole



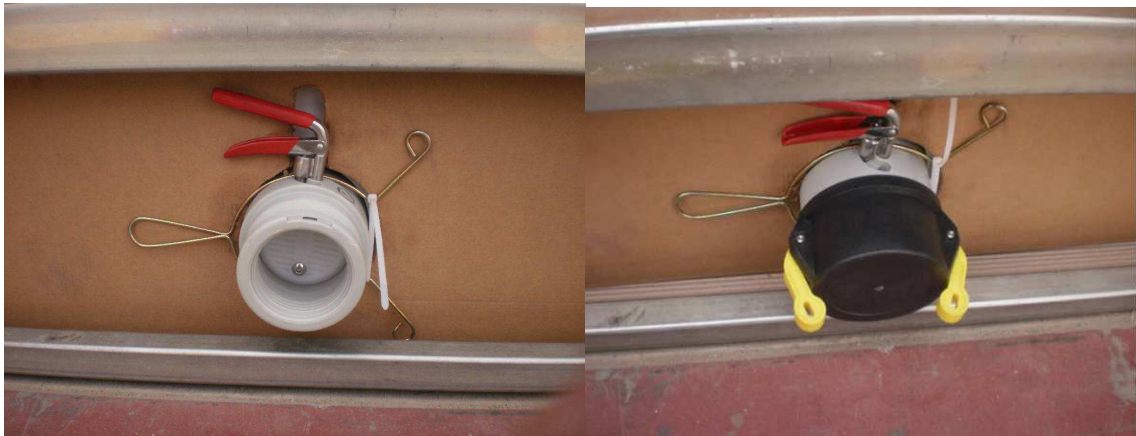
13. Hang the flexibag with red ribbon and fix it to the second metal bar outside



14. Clip the valve outside the hole and avoid valve retract into container when loading.



15. Fasten the clip and put on the valve cap.



16. Automatic airvent operation introduction:

Load cargo from valve directly after flexitank installed. The unique design of airvent makes it available to exhaust air when air pressure in flexitank reached to 0.0065Mpa during loading and transportation. This provided a normal pressure in flexitank. Airvent is 100mm height which could effectively prevent liquid run out.



VII. Loading Cargo

1. Open right door of container.



Warning: don't open the left door when loading!

2. Open the handle of the valve.
 3. Hang the tube up at the door and check the tube and the joint connection, make sure the connection is tight , turn on the power and start loading .
 4. Stop pumping when it reached the limit capacity, close the valve and disconnect the tube.
 5. Clock the right door and impose lead seal.
- Note: Arrange staff to watch the loading process, and watch carefully to ensure there is no leakage because of insecure connection.

VIII. Discharging Cargo

1. Check the outlook and appearance of the container to see if any leakage. If any leakage, contact the consigner immediately.
2. Open the right door of the container and connect the quick connector along with tube to the valve(Keep the left door of the container closed).
3. Connect the other side of the tube to the pump and a storage container, open the handle of the valve, pour liquid into pump and then turn on the power switch of the pump.
4. When the liquid discharging is almost finishing, remove the bulk head and slowly lift the tail of the flexitank, make the residual liquid flow out of valve.
5. When the liquid is completely discharged, take out the flexitank. Discharge procedure finished.

IX. FlexiTank Disposal

We only acknowledged 2 methods of flexitank disposal:

1 .Incineration

Incineration is the preferred disposal method. This including deliver the used flexitank with accessories to a designated and authorized company who complies with local and environmental regulations.

2. Landfill

Landfill is the other disposal method. In this instance, all valves and vent ports should be removed from the flexitank before landfilling. The material of the flexitank should then be cut into pieces with sizes no larger than 1sq.m. The material can then be delivered to a designated and authorized company, which complies with local and environmental regulations.

